



Tiger 2 Technology

The Tiger 2 is an innovative “self-advancing” nasal jejunal feeding tube that allows peristalsis to pull it directly and safely into the small bowel, providing quick enteral access for delivery of nutrition and/or medication.



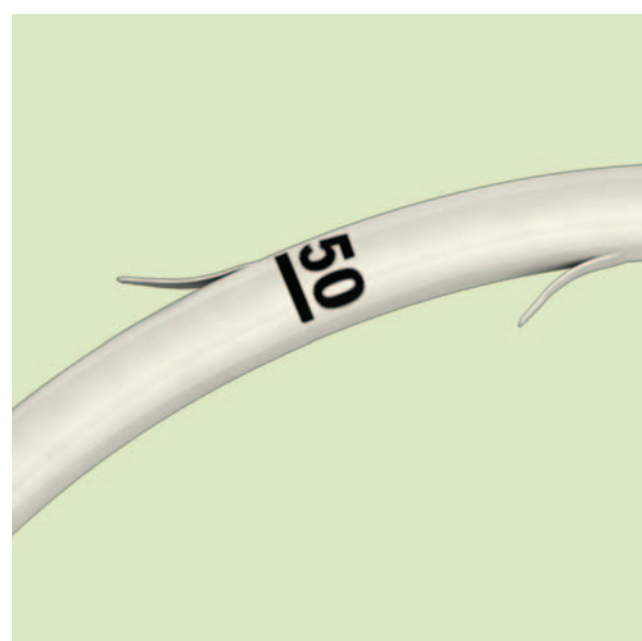
Product Features

14.0 French Diameter

optimizes feeding capabilities of medications and thicker, fiber-containing formulas.

155 cm Length

helps to prevent migration.



Centimeter Markings

every 10 cm from 40-100 cm provide visual confirmation of tube position.

5 Sideports

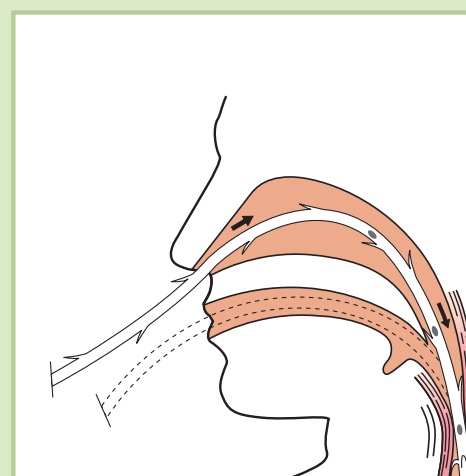
help to prevent tube from clogging.



Optional Torque Cable

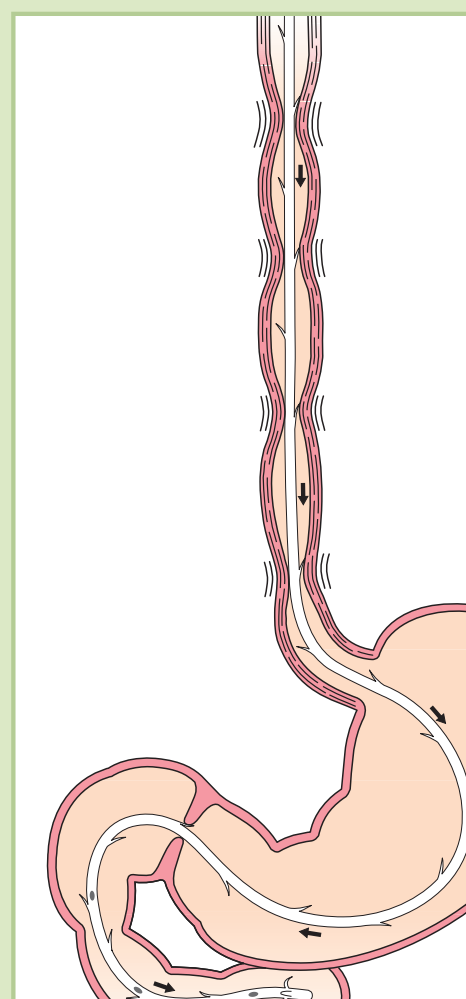
can be used to add body/stiffness.

Suggested Insertion Instructions



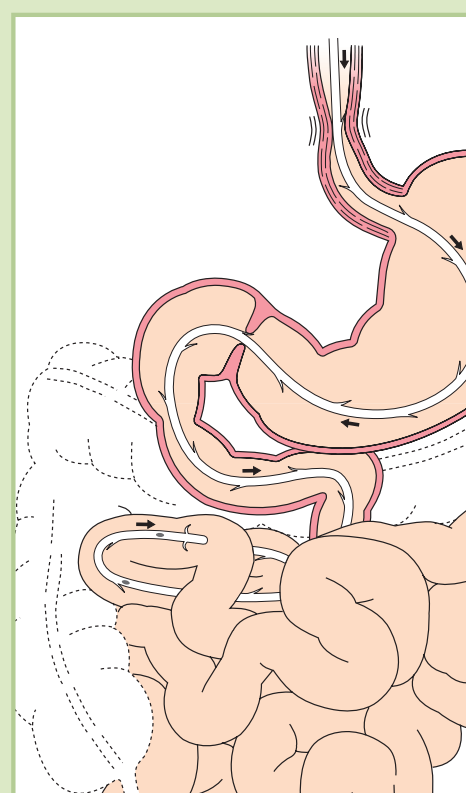
1. Apply lubrication to the distal tip of the Tiger 2.
2. Advance the feeding tube nasally or orally, initially 50-70 cm into the stomach (dependent upon patient's anatomical measurements).

Note: The optional torque cable may be used to advance the tube 50-70 cm. Cable must be inserted in the Tiger 2 prior to placement in patient. Remove the cable after advancement into the stomach is achieved.



Note: Do not reinsert torque cable while the Tiger 2 is in the patient. Insufflation and auscultation may be used to confirm that the distal tip of the feeding tube is in the stomach.

3. The Tiger 2 should be left in place at 50-70 cm for 30 minutes to 1 hour.
 4. Thereafter, advance the tube 10 cm every 30 minutes to 1 hour until the 100 cm mark is reached.
- Note:** If peristalsis activity is weak, the Tiger 2 can be advanced 10 cm every 2 hours.
5. If the patient's stomach is anatomically abnormal, advance the tube in 5 cm increments.
 6. Pharmacological agents may be used to increase peristalsis in accordance with standard institutional protocol.
 7. At the 100 cm mark, take an abdominal x-ray to confirm placement in the small intestine.
- Note:** Usually placed within 3-4 hours; however, placement could take 12-24 hours with decreased peristalsis.
8. Secure appropriately to endotracheal tube or nose once the tube is fully advanced.



Tube Removal

Caution: Remove the Tiger 2 in a slow, controlled manner.

Note: These Suggested Insertion Instructions are an outline highlighting the insertion and removal process for the Tiger 2 Self-Advancing Nasal Jejunal Feeding Tube. The *Suggested Instructions for Use* booklet should be consulted for a more thorough examination of the insertion and removal protocol, indications, contraindications, warnings and precautions.