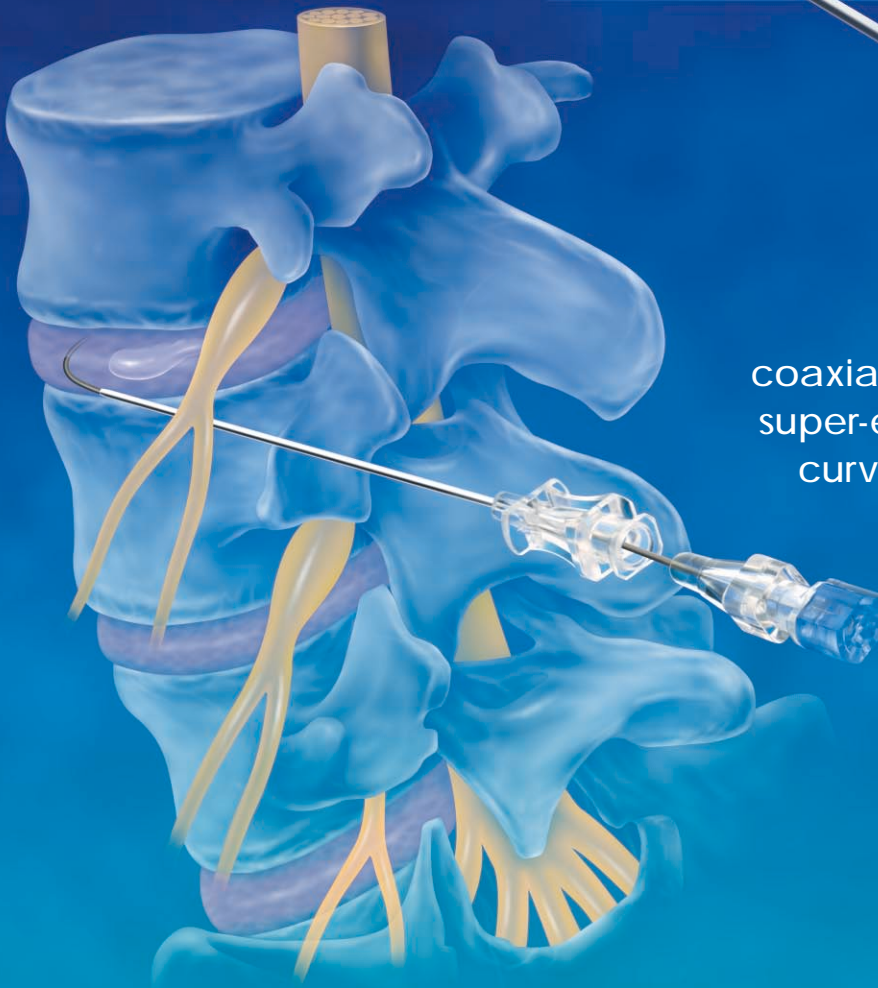


# Pakter

Curved Needle Set

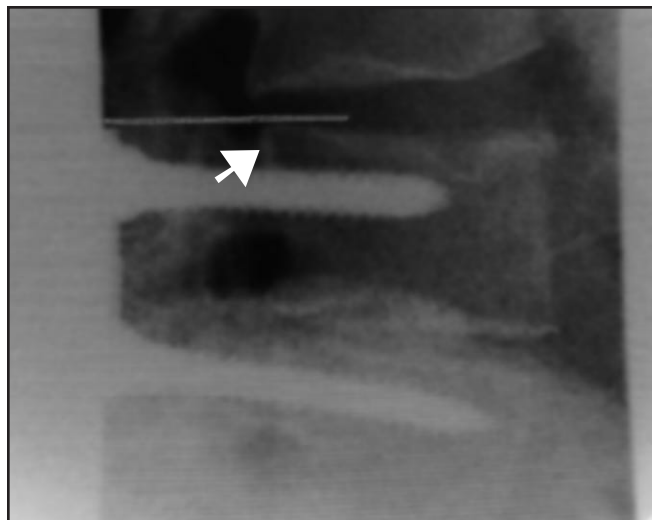


coaxial pre-shaped  
super-elastic nitinol  
curved needle

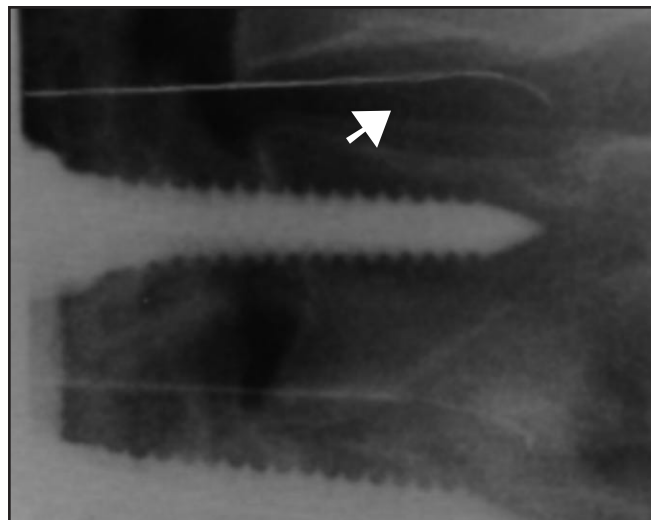
COOK<sup>®</sup>

# Case Study **Pakter Curved Needle Set**

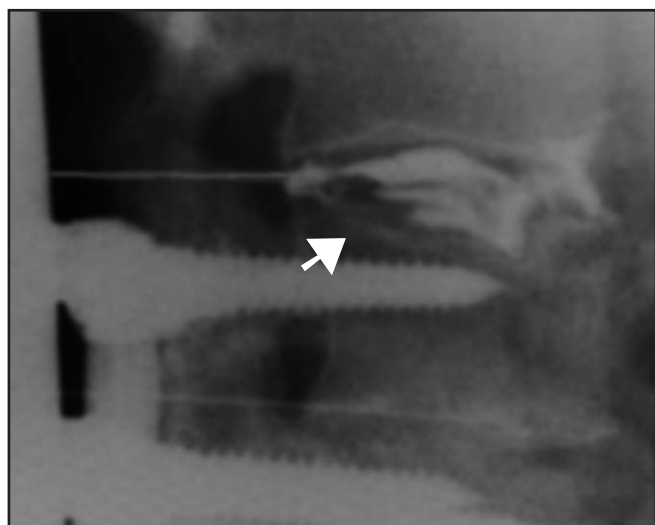
## Discography of a postoperative 41 year old male with pain



21 gage guide needle place adjacent to L3-4 disc (cephalad to fusion).



25 gage nitinol needle advanced into disc.

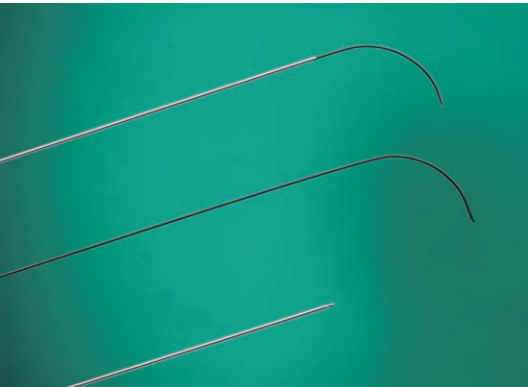


Contrast is injected; patient experiences pain concordant with his usual symptoms. A "soft" end-point of 2 atmospheres is measured by pressure injection syringe as contrast is injected. Discogram shows diffuse disruption of the annulus.



Computed tomographic discogram correlation show anterior and posterior tears with minimal anterior extravasation.

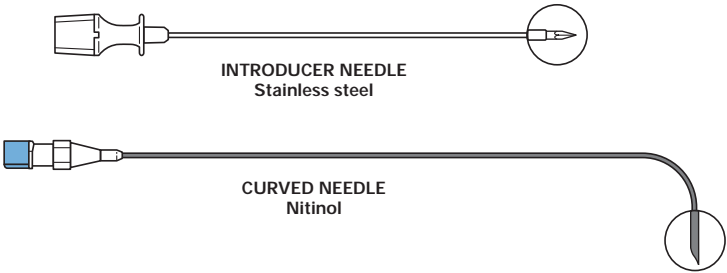
PAKTER CURVED NEEDLE SETS



Used for discography, diagnostic sampling, aspiration and injection.

- The 21 gage needle is used to establish a tract through which the 25 gage curved needle is inserted.
- The 25 gage curved needle is made from the super-elastic nitinol alloy which provides greater directional control for pinpoint accuracy.

Supplied sterile in peel-open packages. Intended for one-time use.



SET ORDER NUMBER	INTRODUCER NEEDLE		CURVED NEEDLE		Quick Reorder Number <sup>1</sup>
	Gage	Length	Gage	Length	
DCHNS-25-15.0-CURVE	21	10 cm	25	15 cm	251791
DCHNS-25-20.0-CURVE	21	15 cm	25	20 cm	256830

<sup>1</sup> The Quick Reorder Number is for U.S.A. domestic use only.

ACKNOWLEDGEMENT  
R. L. Pakter, Department of Radiology, Marin General Hospital, Greenbrae, California.

# COOK®

Diagnostic and Interventional Products

[www.cookgroup.com](http://www.cookgroup.com)

**COOK INCORPORATED**

P.O. Box 489, Bloomington, IN 47402-0489 U.S.A.

Phone: 812 339-2235, Toll Free: 800 457-4500, Toll Free FAX: 800 554-8335

**COOK (CANADA) INC.**

111 Sandiford Drive, Stouffville, Ontario, L4A 7X5 CANADA

Phone: 905 640-7110, Toll Free: 800 668-0300

**WILLIAM A. COOK AUSTRALIA PTY. LTD.**

Brisbane Technology Park, 12 Electronics Street, Eight Mile Plains

Brisbane, QLD 4113 AUSTRALIA, Phone: +61 7 38 41 11 88

**WILLIAM COOK EUROPE ApS**

Sandet 6, DK-4632, Bjaeverskov, DENMARK, Phone: +45 56 86 86 86

© COPYRIGHT COOK INCORPORATED 2001

CURVE201