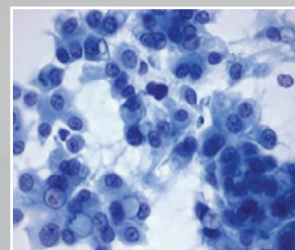
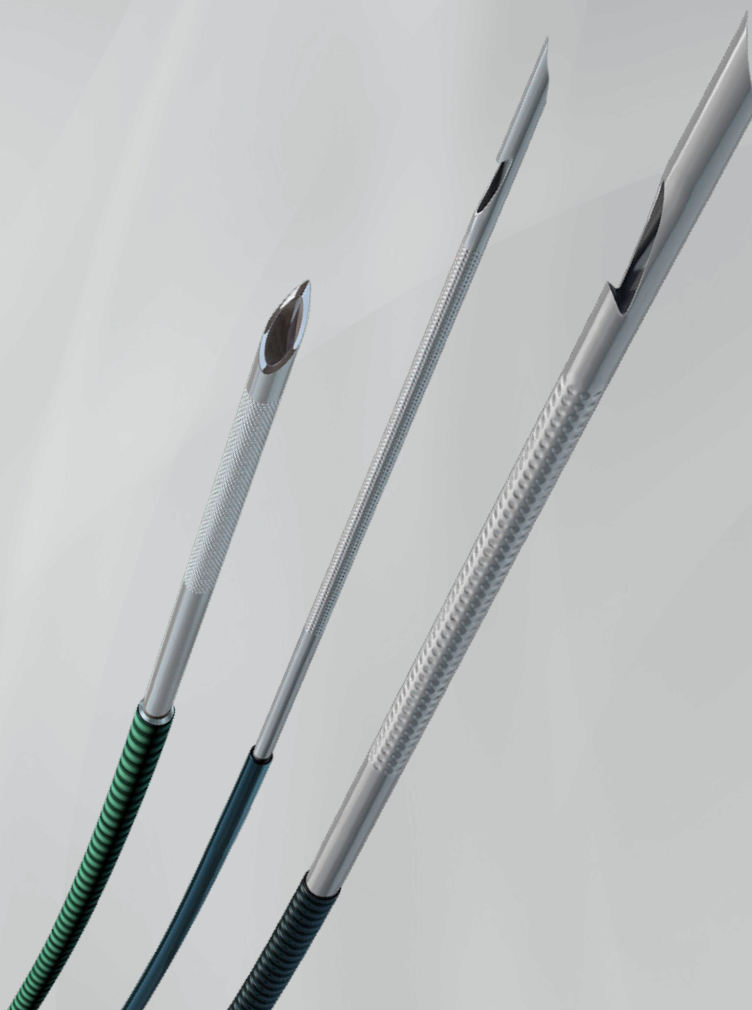
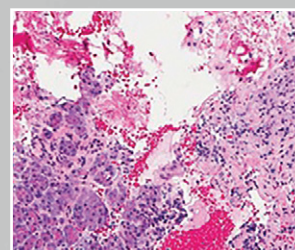


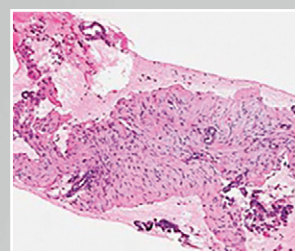
Cytology, cell block or core: Results you can see.



Cytology



Cell Block



Core

EchoTip ProCore[®]
HD ULTRASOUND BIOPSY NEEDLE

EchoTip[®] Ultra
HD ENDOSCOPIC ULTRASOUND NEEDLE



www.cookmedical.com

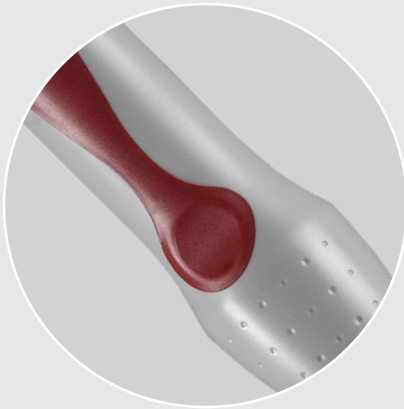
Pathology images courtesy of James Farrell, MD
Interventional Endoscopy and Pancreatic Diseases Section of Digestive
Diseases, Yale University School of Medicine.

Leading the way in EUS since 1998.

Over the years, you've told us what matters to you and, as the EUS market leader, we've listened.

Incorporating extensive feedback provided by clinicians, we now offer you our latest developments in needle flexibility and sampling capability, tailored to you and your pathologist's needs and heavily supported by published clinical data.

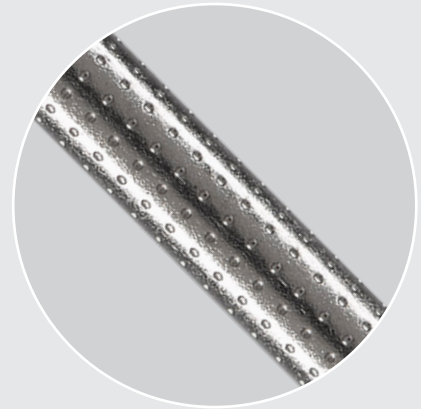
We pioneered the needle qualities you asked for...



**Ergonomic, contoured
handle for precise needle
control and stability**



**Integrated sheath adjuster
ensures compatibility
with a full range of
echoendoscopes**



**Patented high-definition
dimpling technology
delivers needle
echogenicity**



Core trap for technology designed for receiving sample into needle



High-performance needle flexibility designed to enhance target access and tissue acquisition



The ReCoil stylet provides easy, secure stylet management, minimizing the risk of contamination

...to give you the solutions you need.

The family of EchoTip Ultra and EchoTip ProCore needles are designed specifically to enhance target access and tissue acquisition.

By balancing sample size and needle flexibility, we give you the tools to target small lesions in even the most difficult locations, while increasing valuable yields with potentially fewer needle passes.

As we continue to lead the EUS field, we will keep working with you to create the most efficient clinical solutions for the best possible patient outcomes.

20
GAUGE

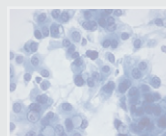
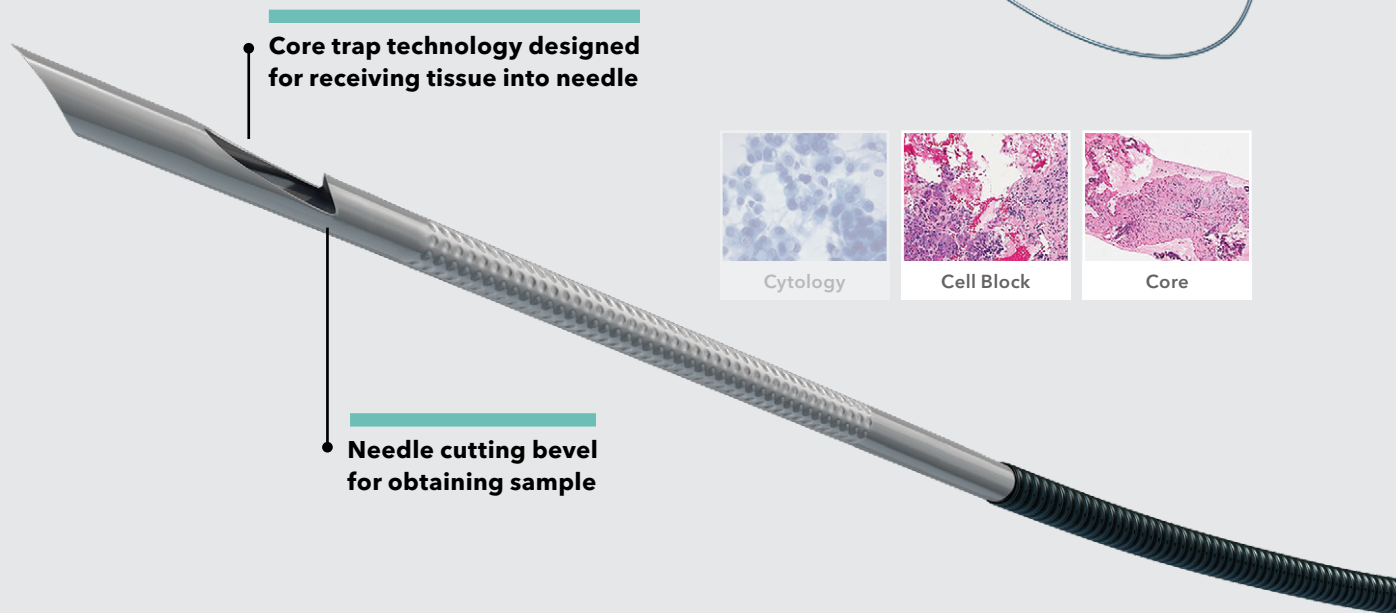
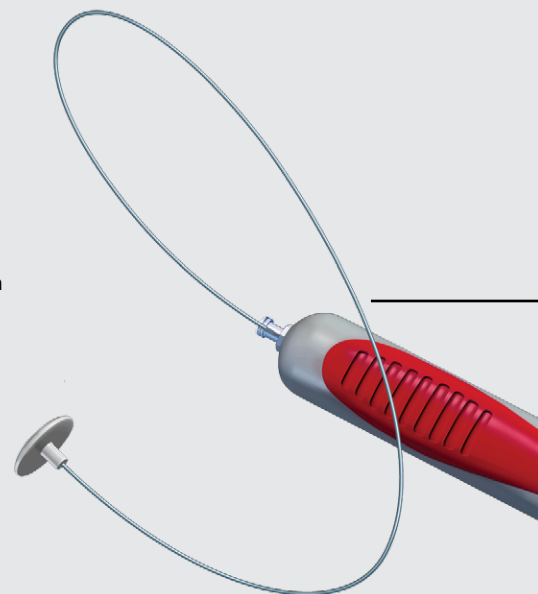
EchoTip ProCore®

HD Ultrasound Biopsy Needle

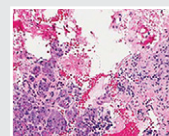
Obtain core biopsies even in the most difficult anatomical positions.

The ProCore 20 gauge has the flexibility to get you where you need to go, including those hard-to-reach targets. This tractability also means there is no need to straighten the scope when advancing the needle through the channel. Once you puncture the target lesion, you have the capacity to acquire pathology from a relatively large sample.

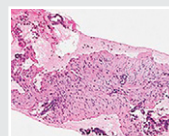
The ReCoil Stylet, helps you to easily manage the stylet, minimizing the risk of contamination.



Cytology



Cell Block



Core



"Cytology is not enough in the diagnosis and treatment of all lesions. You need sufficient quality of material to correctly characterise tumours and conditions. The EchoTip ProCore 20 gauge needle is a good compromise between the ease of use of a small needle and the quality of sample you can achieve with a bigger needle."

*Marc Giovannini, MD, PhD, Endoscopic Unit,
Paoli-Calmettes Institute Marseilles, France*



"The Cook 20 gauge EchoTip ProCore offers improved flexibility for those more difficult EUS-FNA biopsy approaches, with easy to-and-fro passage of the needle, along with a larger 20 gauge needle to yield histologic grade tissue for both diagnosis and ancillary studies."

James Farrell, MD
*Interventional Endoscopy and Pancreatic Diseases Section of Digestive Diseases
Yale University School of Medicine*

ReCoil™ Stylet helps you to easily manage the stylet, minimizing the risk for contamination

Coiled sheath facilitates needle flexibility

FEATURING

ReCoil™
Stylet



"You are as flexible with this needle as you can be with a smaller gauge. You do not need to sacrifice on flexibility for size."

Prof. Marco J. Bruno, MD, PhD, Erasmus Medical Center
Gastroenterology & Hepatology Department, Rotterdam, Netherlands

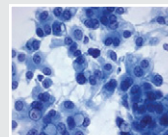
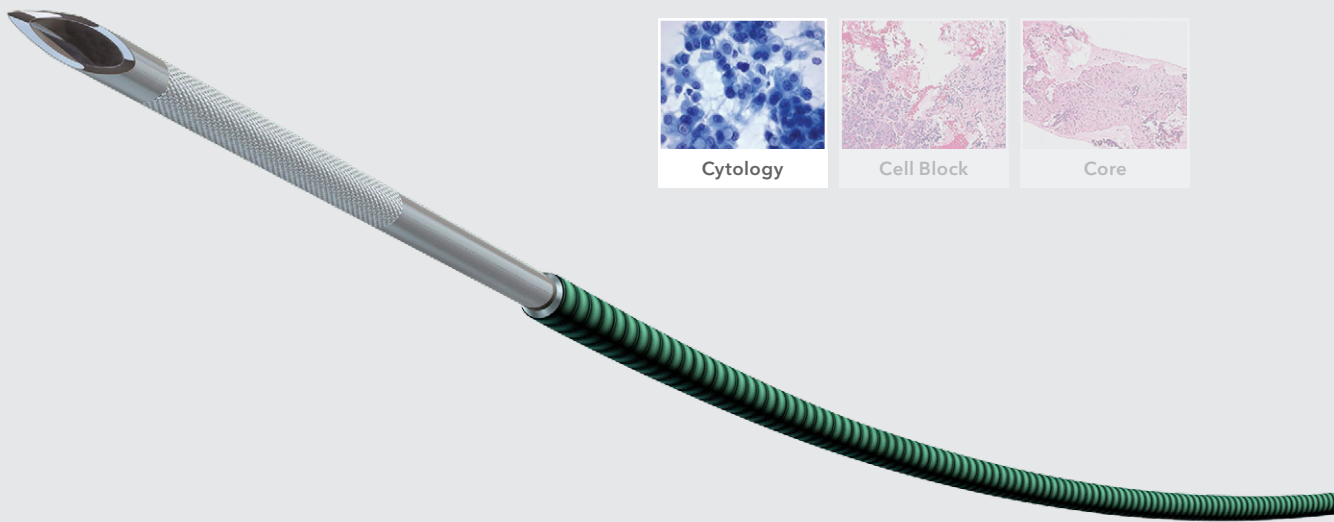
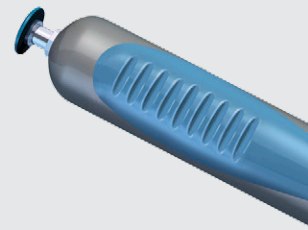
22
GAUGE

EchoTip® Ultra

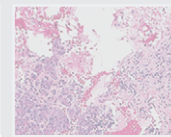
HD Endoscopic Ultrasound Needle

The easiest path to difficult locations.

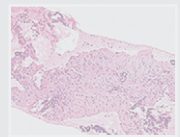
Thanks to its highly flexible coiled sheath, the EchoTip Ultra 22 gauge gets you to difficult positions for sampling lesions. Even in torqued positions, you can acquire quality samples with the longtime best-selling EUS needle on the market.



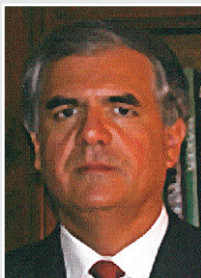
Cytology



Cell Block

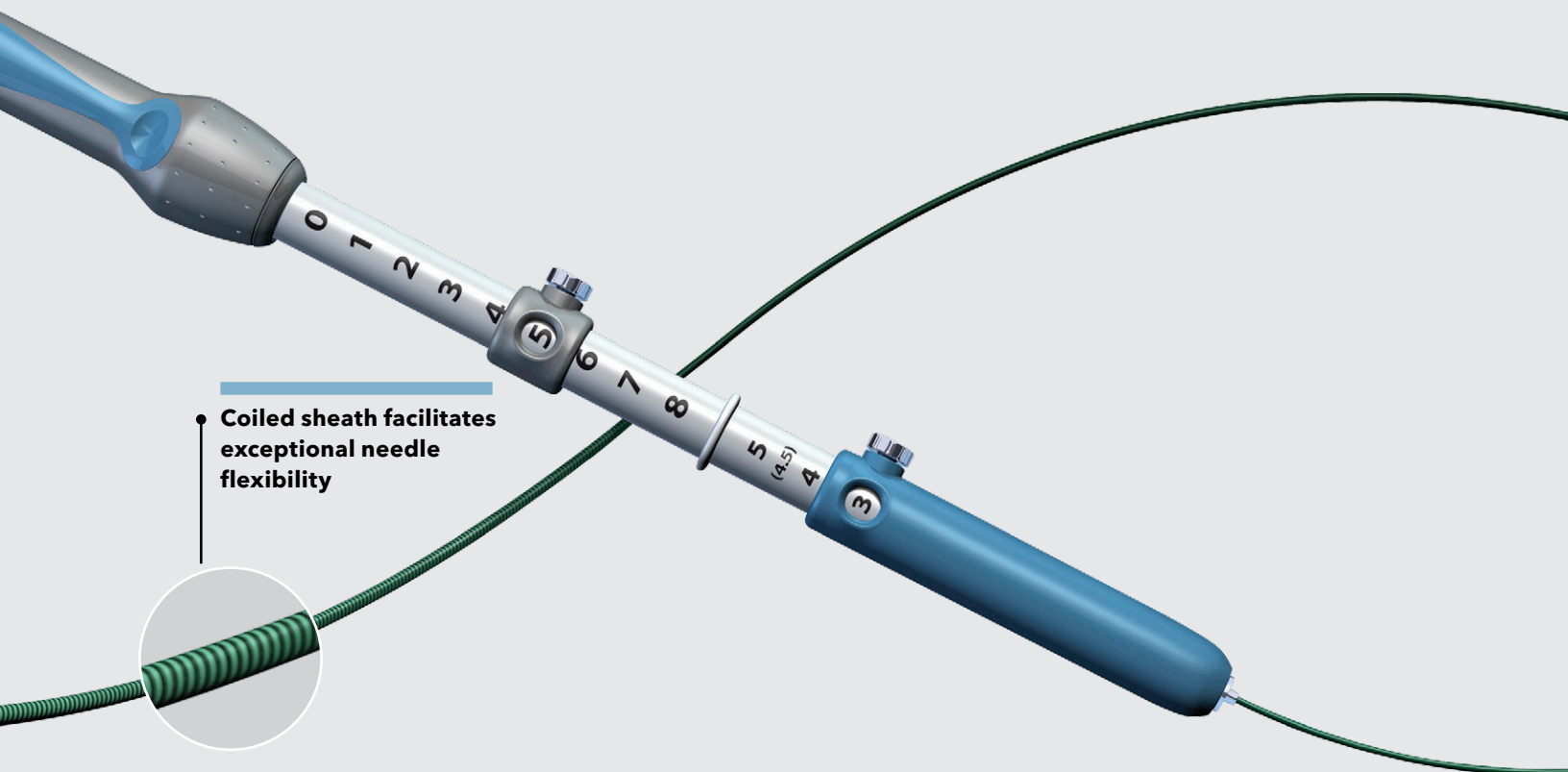


Core



"In my personal experience, more than sixteen years, of pancreatic EUS-FNA; the ECHO-3-22 has proven to be the best needle to use in difficult and twisted echoendoscope positions in the stomach, beyond the pylorus and from the second duodenum."

**Prof. Claudio G. De Angelis, Chief Endoscopy and Endosonography Center
Città della Salute e della Scienza di Torino, University of Turin**



"Since 1998, I am a regular user of the ECHO-3-22 due to its coiled sheath, which in my opinion is the most flexible sheath of all needles on the market. The needle allows me to puncture precisely regardless of the anatomical location or size of the target."

Dr. Laurent Palazzo
Clinique du Trocadero, Paris
Former President of the French Society of Gastroenterology
and of the French Society of Digestive Endoscopy

25
GAUGE

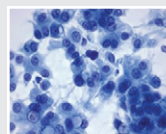
EchoTip ProCore®

HD Ultrasound Biopsy Needle

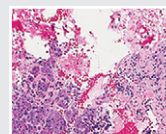
Small needle. Big results.

Our smallest and most flexible tissue acquisition needle, the EchoTip ProCore is a perfect everyday needle that balances cytology and histology acquisition to obtain a cell block sample. The dependability of the ProCore 25 gauge is reflected in numerous studies showing excellent first-pass diagnoses in malignant tumors.*

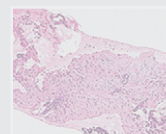
Core trap technology designed for receiving sample into needle



Cytology



Cell Block



Core



"The EUS-FNA 25-gauge needle with a core trap by a single pass offers significantly better sample quality for histological diagnosis of solid pancreatic masses compared with the 25-gauge standard needle, especially in transduodenal access and tumors of 3 cm or more in size."

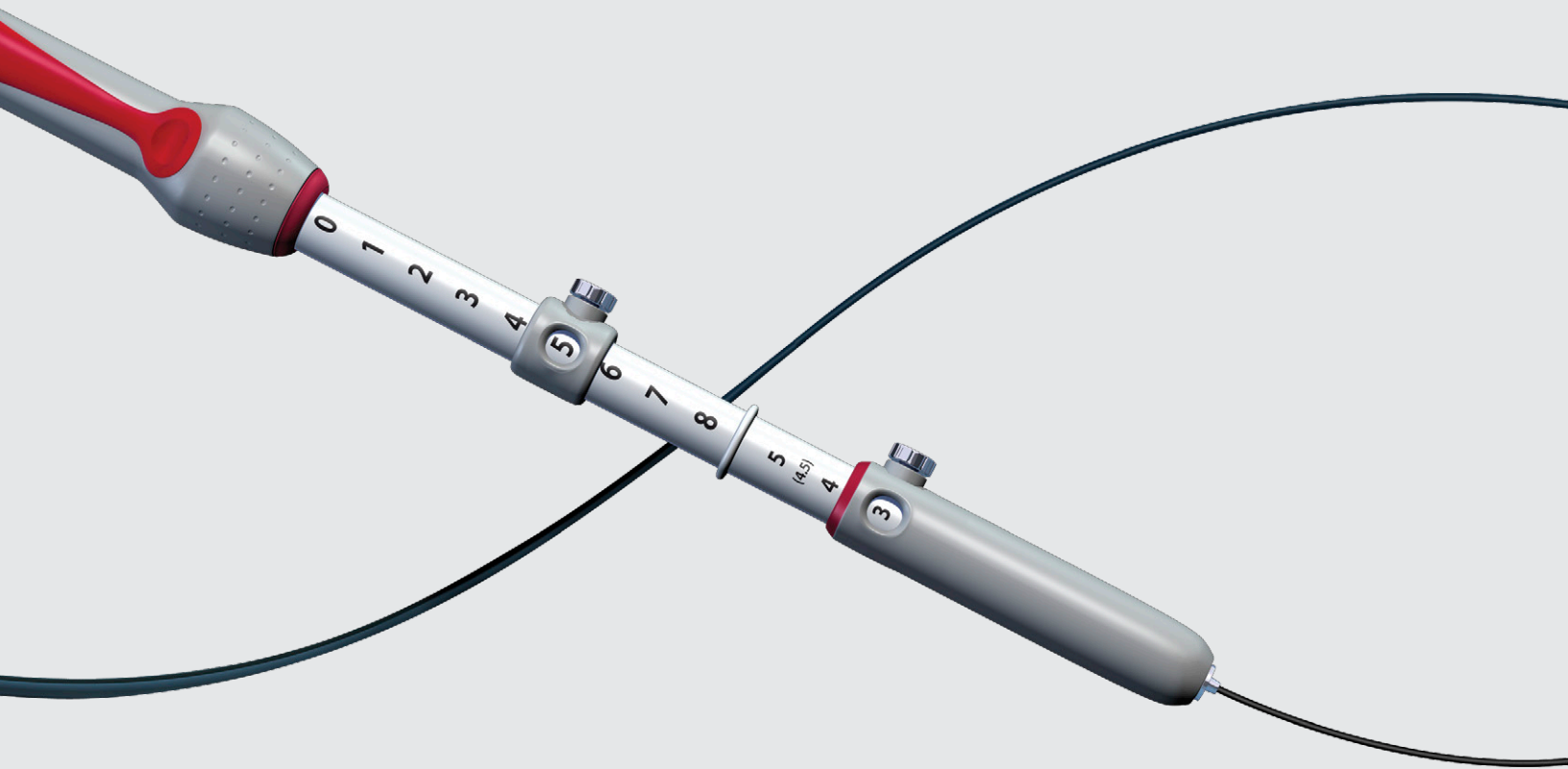
*Masayuki Kitano, MD, Department of Gastroenterology and Hepatology
Kinki University School of Medicine, Osaka-sayama, Japan*

*Studies outlined overleaf.



"The 25 gauge ProCore needle has become my "go-to" needle for the cytologic diagnosis of pancreatic tumors or lymph nodes. The yield is very high within 1-2 passes."

Dr. Kenneth Chang
*Executive Director H.H. Chao Comprehensive Digestive Disease Center
University of California–Irvine Orange, California*



"The design of the EchoTip ProCore 25 gauge needle assists the physician in consistently obtaining histological samples through endoscopic ultrasound. In our early experience, the ProCore needle has improved our diagnostic yield over standard fine needle aspiration and has already impacted patient outcomes."

Sri Komanduri, MD, Director of Interventional Endoscopy,
Feinberg School of Medicine, Northwestern University, Chicago, IL

Focus on results.

20
GAUGE

EchoTip ProCore®
HD Ultrasound Biopsy Needle

- With a mean of 1.7 passes, sample quality was adequate for histological assessment in 92% of lesions.*

*Feasibility and diagnostic yield of a new EUS guided histology 20-gauge needle in the evaluation of intrainestinal and extraintestinal lesions; Iglesias-Garcia, Julio; van Riet, Priscilla A.; Larghi, Alberto; Giovannini, Marc; Petrone, Maria C.; Lariño-Noia, Jose; Poley, Jan-Werner; Bories, Erwan; Dabizzi, Emanuele; Abdulkader, Ihab; Monges, Genevieve M.; Biermann, Katharina; Rindi, Guido; Doglioni, Claudio; Costamagna, Guido; Arcidiacono, Paolo G.; Bruno, Marco J.; Dominguez-Munoz, Enrique

25
GAUGE

EchoTip ProCore®
HD Ultrasound Biopsy Needle

- ProCore 25 gauge is able to obtain sufficient material for accurate diagnosis with a single pass in 81% of cases.¹
- Quantity of material obtained with 25 gauge ProCore was superior, with rich cellularity.¹
- ProCore 25 gauge is able to obtain sufficient material for accurate diagnosis with a single pass in 83% of cases.²
- ProCore 25 gauge can provide adequate material with up to 96% diagnostic accuracy in 3 passes.^{2,3}
- Rapid on-site cytology to assess adequacy of specimen is not necessary for these results.^{3,1}
- 96% of patients without a definite diagnosis with FNA were able to obtain a diagnosis with ProCore.⁴

¹ Prospective Multicenter Randomized Controlled Trial of Histological Diagnostic Yield comparing 25G EUS-FNA Needles with and without a Core Trap in Patients with Solid Pancreatic Masses; Hiroko Nebiki, et al

² High single-pass diagnostic yield of a new 25-gauge core biopsy needle for EUS-guided FNA biopsy in solid pancreatic lesions; Iwashita, et al

³ Core biopsy needle versus standard aspiration needle for endoscopic ultrasound-guided sampling of solid pancreatic masses: a randomized parallel-group study; Yun Nah Lee, et al

⁴ A Multicenter Prospective Randomized Controlled Cross-Over Trial Comparing Endoscopic Ultrasound (EUS)-Guided Fine Needle Aspiration (FNA) and Fine Needle Biopsy (FNB) for Pancreatic and Non-Pancreatic Masses; A. Aziz Adam, et al

Collaborative education and training.

We are always seeking to provide stimulating and productive educational opportunities for clinicians to enhance their knowledge of new technologies and learn about exciting new procedural techniques. Cook Medical's Vista programs encourage physician and industry collaboration to improve patient care by sharing best practices. Vista programs foster collaboration among the best and the brightest gastroenterologists in the world who all share one common goal: Improving patient care.

We also share our experience in EUS to facilitate training and education through online resources in the following locations:



www.youtube.com/cookmedicalendoscopy

Endoscopic Ultrasound

Video Library - www.cookmedical.com

Product Specifications

20
GAUGE

EchoTip ProCore® HD Ultrasound Biopsy Needle

Order Number	Reference Part Number	Needle Size Gauge	Sheath Size Fr	Adjustable Needle Extension cm	Stylet Tip	Minimum Accessory Channel mm
G34785	ECHO-HD-3-20-C	20	7.95	0-8	recessed ball tip	3.7

22
GAUGE

EchoTip® Ultra HD Endoscopic Ultrasound Needle

Order Number	Reference Part Number	Needle Size Gauge	Sheath Size Fr	Adjustable Needle Extension cm	Stylet Tip	Minimum Accessory Channel mm
G31521	ECHO-3-22	22	5.2	0-8	ball tip	2.8

25
GAUGE

EchoTip ProCore® HD Ultrasound Biopsy Needle

Order Number	Reference Part Number	Needle Size Gauge	Sheath Size Fr	Adjustable Needle Extension cm	Stylet Tip	Minimum Accessory Channel mm
G55738	ECHO-HD-25-C	25	5.2	0-8	beveled	2

Some products or part numbers may not be available in all markets. Contact your local Cook representative or Customer Service for details.

Customer Service

EMEA: EDI - www.cookmedical.com/edi.do
Distributors: +353 61239240, ssc.distributors@cookmedical.com
Austria: +43 179567121, oe.orders@cookmedical.com
Belgium: +32 27001633, be.orders@cookmedical.com
Denmark: +45 38487607, da.orders@cookmedical.com
Finland: +358 972519996, fi.orders@cookmedical.com
France: +33 171230269, fr.orders@cookmedical.com
Germany: +49 6950072804, de.orders@cookmedical.com
Hungary: +36 17779199, hu.orders@cookmedical.com
Ireland: +353 61239252, ie.orders@cookmedical.com
Italy: +39 0269682853, it.orders@cookmedical.com
Netherlands: +31 202013367, nl.orders@cookmedical.com
Norway: +47 23162968, no.orders@cookmedical.com
Spain: +34 912702691, es.orders@cookmedical.com
Sweden: +46 858769468, se.orders@cookmedical.com
Switzerland - French: +41 448009609, fr.orders@cookmedical.com
Switzerland - Italian: +41 448009609, it.orders@cookmedical.com
Switzerland - German: +41 448009609, de.orders@cookmedical.com
United Kingdom: +44 2073654183, uk.orders@cookmedical.com

www.cookmedical.com

Americas: EDI - www.cookmedical.com/edi.do
Phone: +1 812.339.2235, 800.457.4500, Fax: 800.554.8335
E-mail: orders@cookmedical.com

Australia:
Phone: +61 734346000, 1800777222, Fax: +61 734346001, 1800077283
E-mail: cau.custserv@cookmedical.com

