

From cytology to histology:
Continuing to increase
your predictive values.



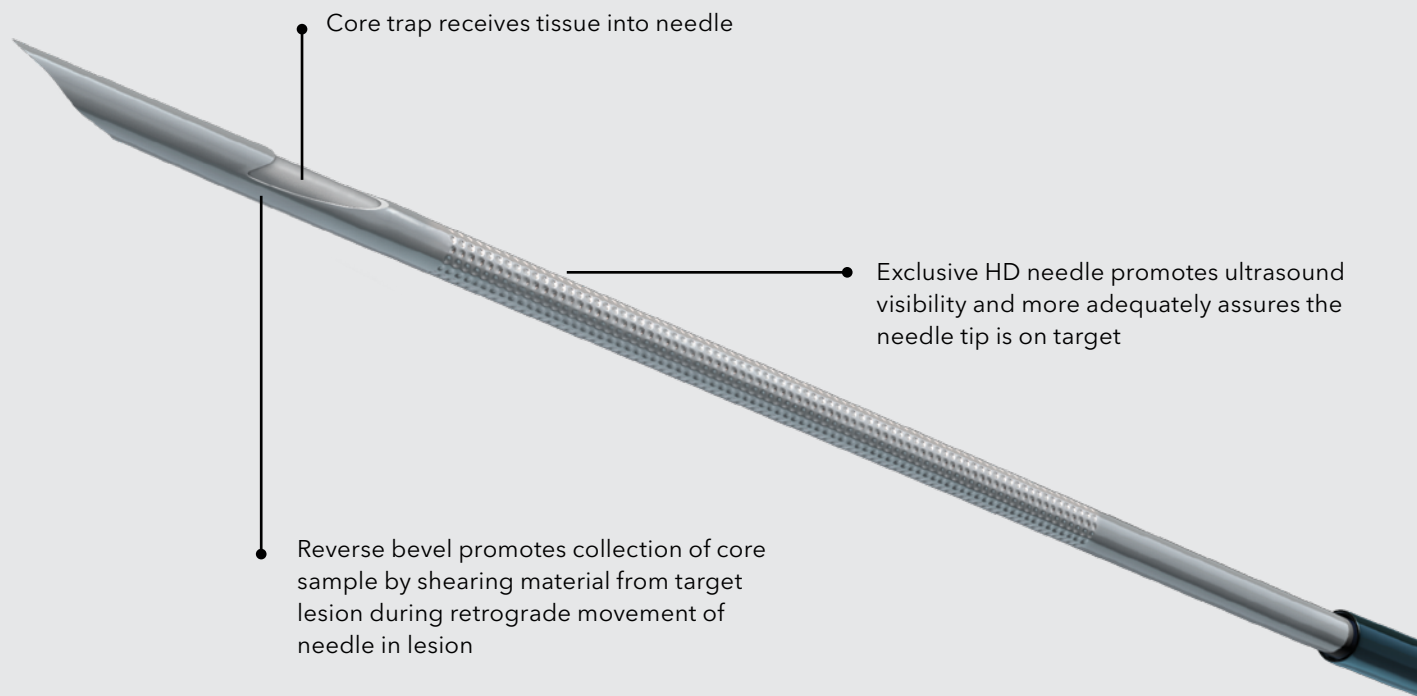
EchoTip ProCore®
HD ULTRASOUND BIOPSY NEEDLE



www.cookmedical.com

Get to the core issue throughout the entire GI tract.

The next-generation ultrasound needle has arrived. The EchoTip ProCore allows for collection of histology with cytology while providing access to the entire GI tract, where you can target smaller lesions and increase your yields, all while decreasing your needle passes.*



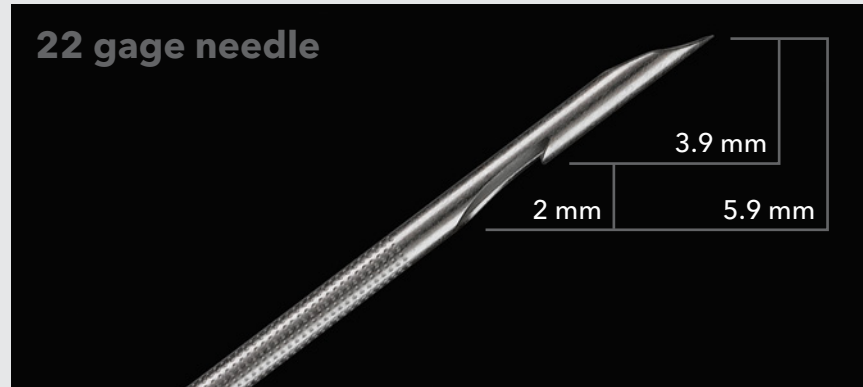
Look to the market leader for all your EUS needs.

For 20 years Cook has been a pioneer in endoscopic ultrasound needles and accessories. From the original EchoTip to the new EchoTip ProCore, we continue to offer the most diverse product line to satisfy your diagnostic and therapeutic needs.

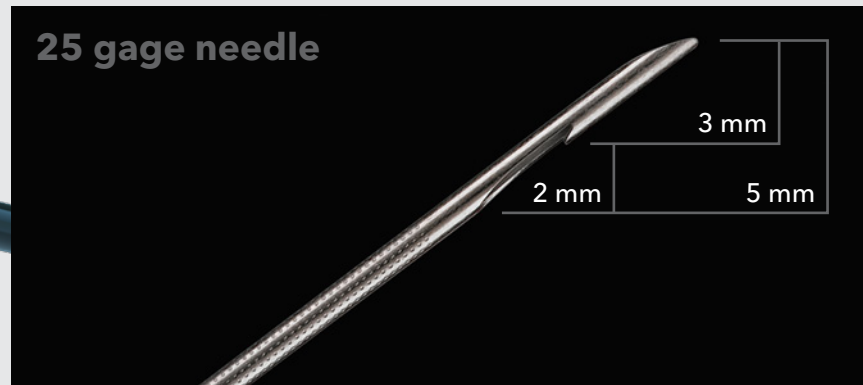
19 gage needle

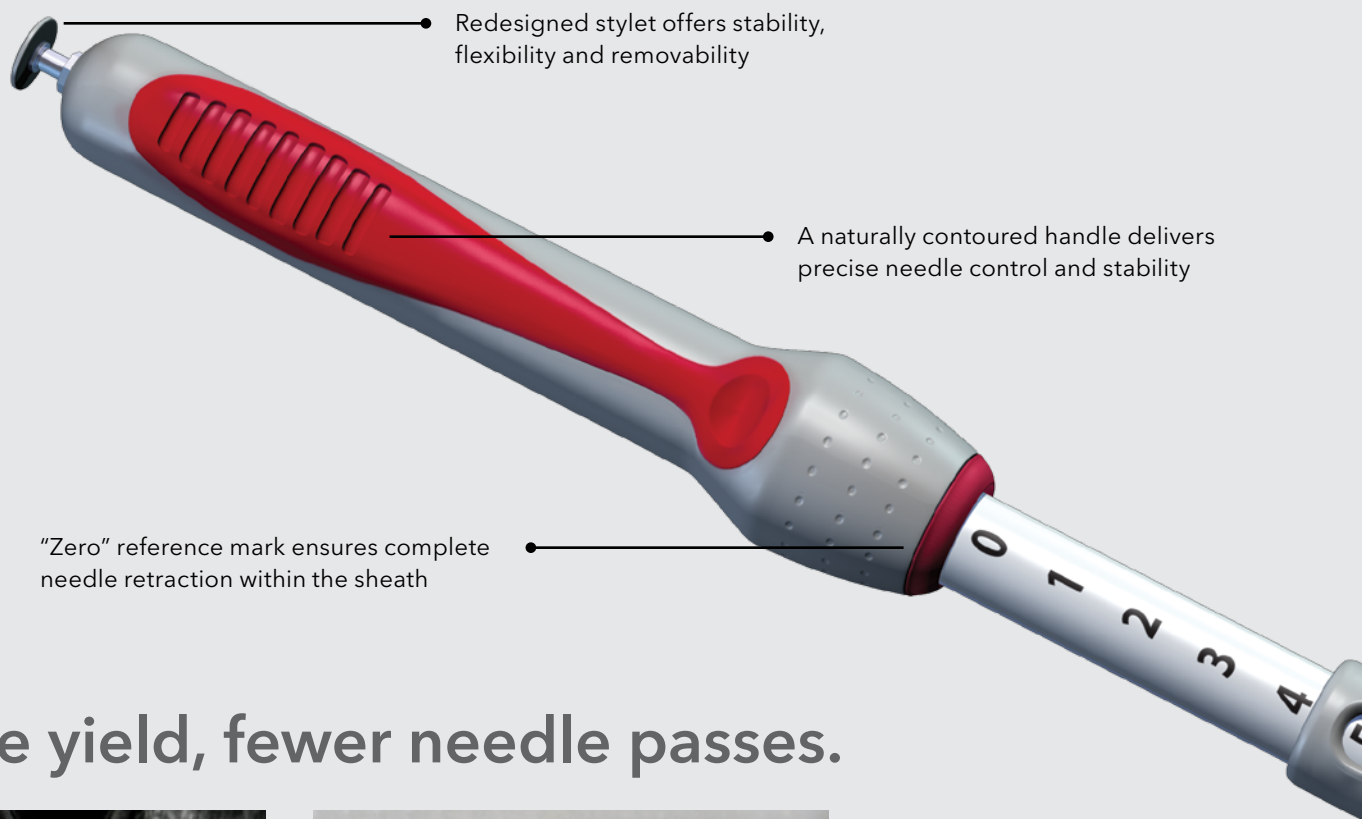


22 gage needle

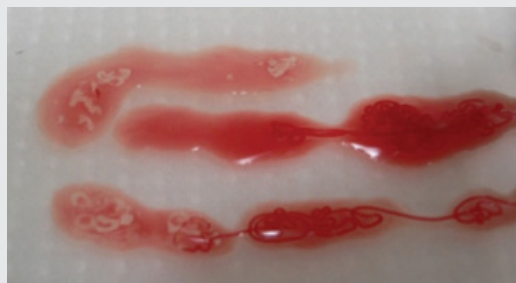


25 gage needle



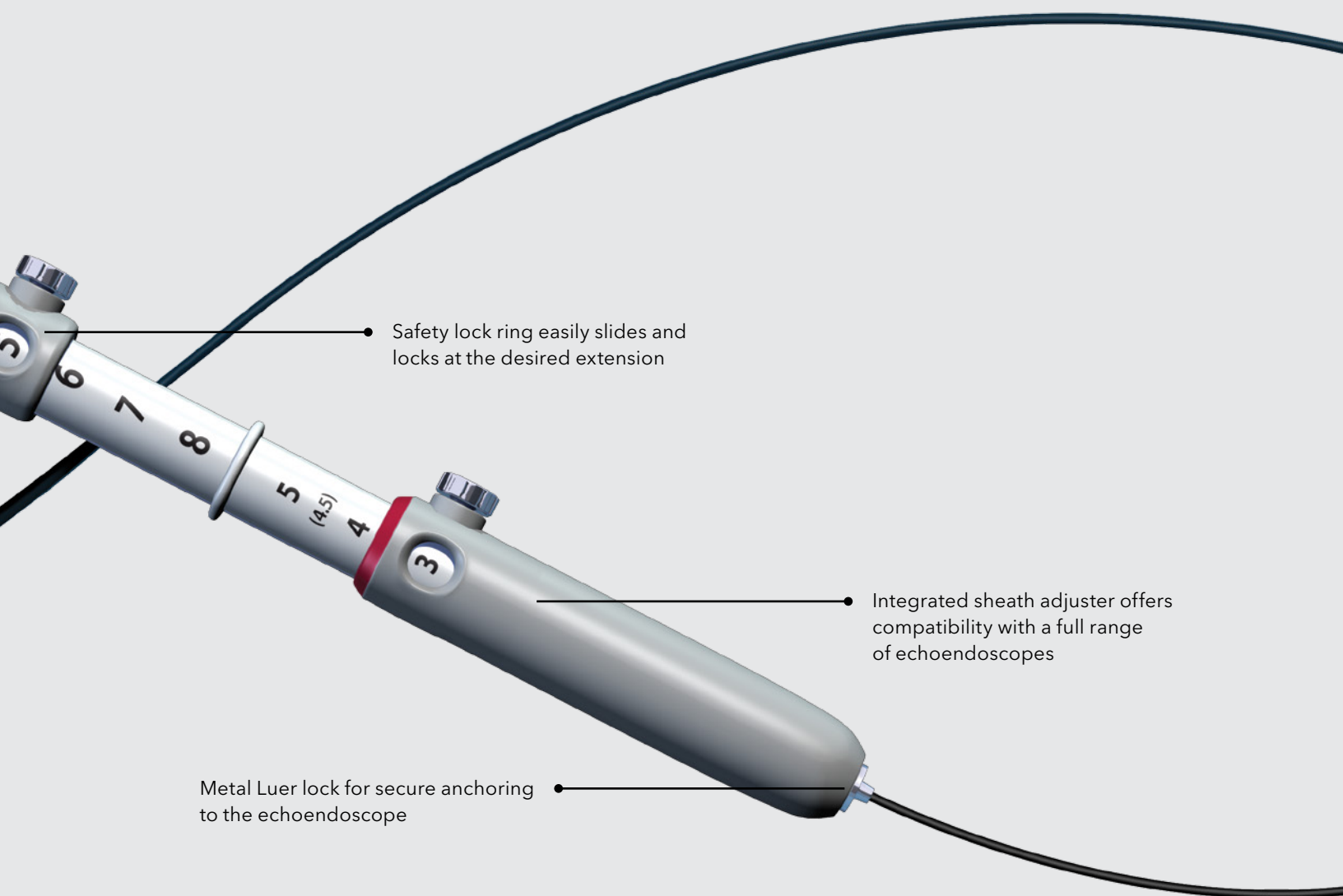


More yield, fewer needle passes.



Conventional technique, exceptional results.

With ProCore, there is no new mechanism to learn because it is used in the same fashion as our current EchoTip Ultra needle. But the result achieved is a core sample that provides vital tissue and cytological information even in target lesions of less than one centimeter.



Product Specifications

Used with an ultrasound endoscope for fine needle biopsy (FNB) of submucosal lesions, mediastinal masses, lymph nodes and intraperitoneal masses within or adjacent to the gastrointestinal tract.

Supplied sterile and is disposable - intended for single use only.

Order Number	Reference Part Number	Needle Gage	Needle Extension cm	Sheath Size Fr	Dimple Pattern	Minimum Accessory Channel mm
G53585	ECHO-HD-19-C	19	0-8	4.8	High Definition	2.0
G55736	ECHO-HD-22-C	22	0-8	5.2	High Definition	2.0
G55738	ECHO-HD-25-C	25	0-8	5.2	High Definition	2.0

Adjustable sheath length. 5 cc and 10 cc vacuum locking syringe included.

Some products or part numbers may not be available in all markets. Contact your local Cook representative or Customer Service for details.

Customer Service

EMEA: EDI - www.cookmedical.com/edi.do

Distributors: +353 61239240, ssc.distributors@cookmedical.com

Austria: +43 179567121, oe.orders@cookmedical.com

Belgium: +32 27001633, be.orders@cookmedical.com

Denmark: +45 38487607, da.orders@cookmedical.com

Finland: +358 972519996, fi.orders@cookmedical.com

France: +33 171230269, fr.orders@cookmedical.com

Germany: +49 6950072804, de.orders@cookmedical.com

Hungary: +36 17779199, hu.orders@cookmedical.com

Ireland: +353 61239252, ie.orders@cookmedical.com

Italy: +39 0269682853, it.orders@cookmedical.com

Netherlands: +31 202013367, nl.orders@cookmedical.com

Norway: +47 23162968, no.orders@cookmedical.com

Spain: +34 912702691, es.orders@cookmedical.com

Sweden: +46 858769468, se.orders@cookmedical.com

Switzerland - French: +41 448009609, fr.orders@cookmedical.com

Switzerland - Italian: +41 448009609, it.orders@cookmedical.com

Switzerland - German: +41 448009609, de.orders@cookmedical.com

United Kingdom: +44 2073654183, uk.orders@cookmedical.com

www.cookmedical.com

Americas: EDI - www.cookmedical.com/edi.do

Phone: +1 812.339.2235, 800.457.4500, Fax: 800.554.8335

E-mail: orders@cookmedical.com

Australia:

Phone: +61 738411188, 1800777222, Fax: +61 738411288, 1800077283

E-mail: cau.custserv@cookmedical.com

