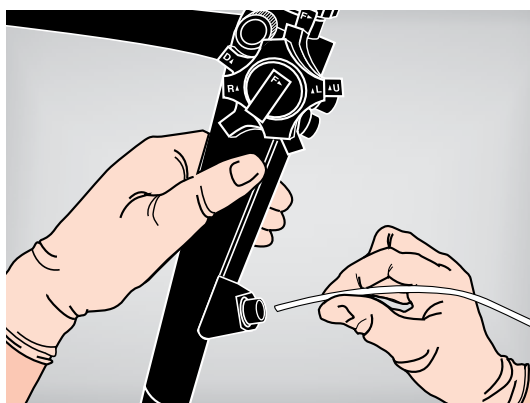


Soehendra®

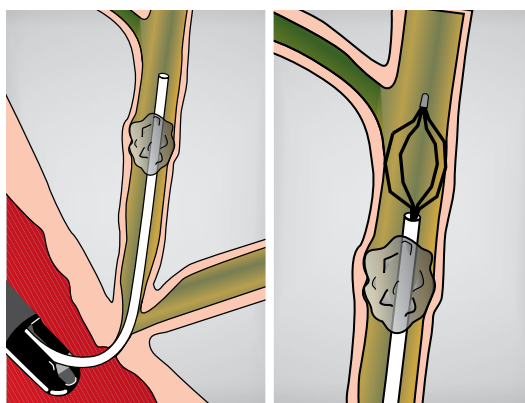
LITHOTRIPTOR

Step 1



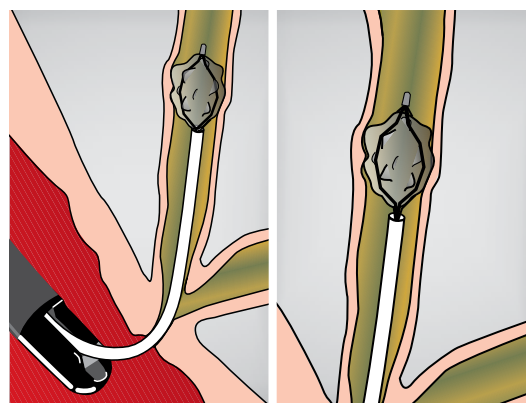
With the basket fully retracted into the sheath, introduce a Cook **soft wire** basket into accessory channel. **Check basket product label to confirm lithotripter compatibility.**

Step 2



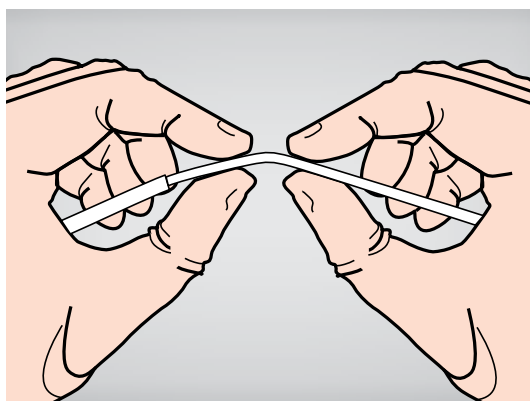
Fluoroscopically advance the sheath of the basket beyond the target. Advance the basket out of the sheath by pushing on the handle.

Step 3



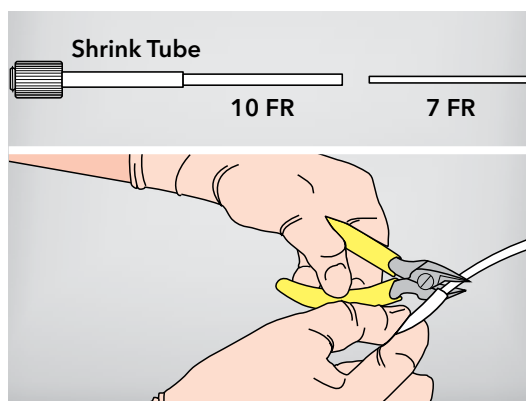
Place the basket around the stone and slowly retract the handle until entrapment is achieved. Tighten the basket wires around the stone.

Step 4



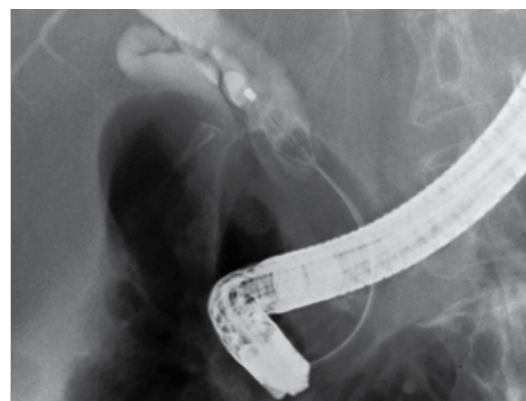
Slightly kink the basket wire and sheath below the handle and shrink tube.

Step 5



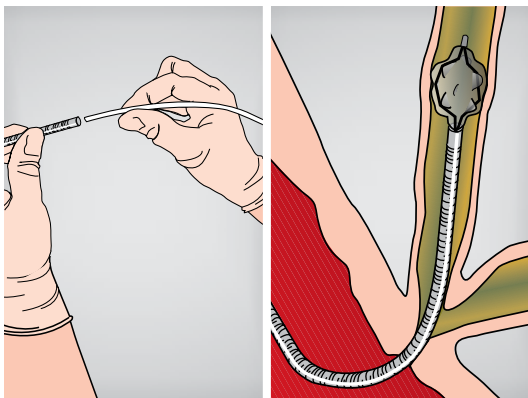
Using wire cutters (not included), cut the handle off the basket below the 10 French sheath and above the kink. **Caution: Do not remove the 7 French sheath from the basket wire. Doing so may result in basket fragmentation and consequently require surgical intervention.**

Step 6



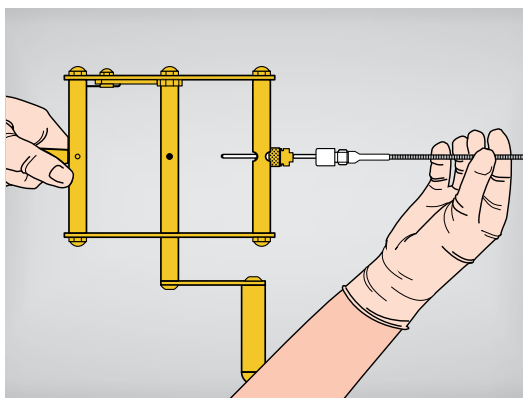
Fluoroscopically monitor the basket and stone while slowly removing the endoscope.

Step 7



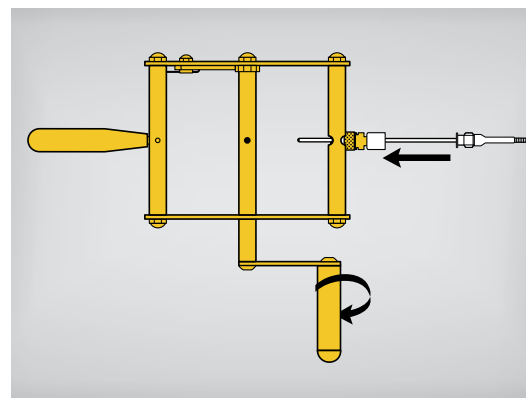
Gently feed the Soehendra lithotripsy cable over the basket sheath. Advance the cable until it reaches the basket in the duct.

Step 8



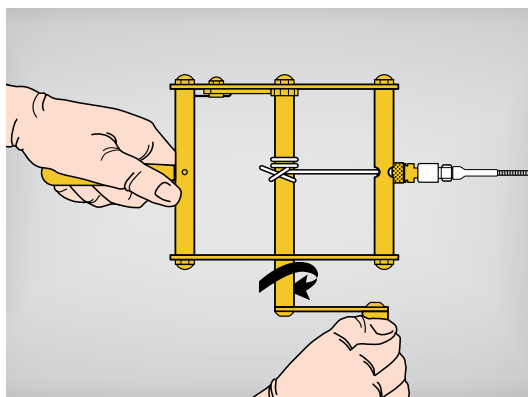
Insert the basket wire and sheath through the male Luer lock fitting on the lithotripsy handle, then through the hole in the rotating rod.

Step 9



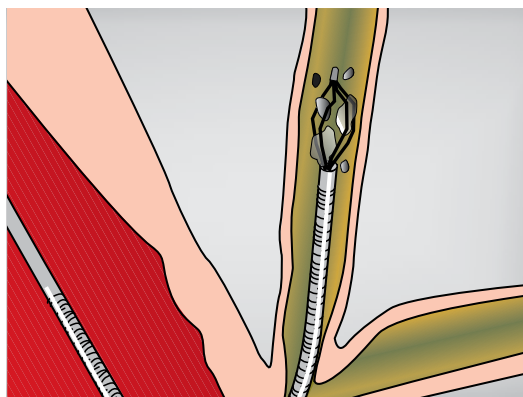
Wrap the wire and sheath several times around the rod to secure them. Rotate the handle until wire is taut and Luer lock cable to handle.

Step 10



To fracture the stone, apply pressure by **slowly** rotating the handle. **Note:** The handle will move in only one direction unless the ratchet is released. **Warning: If basket fragmentation should occur, surgical intervention may be necessary.**

Step 11



After the stone has been fractured, assess the need to remove the fractured stone from the duct. Release the ratchet on the handle and remove the basket. Clean and prepare the Soehendra Lithotriptor handle and cable for future use.

Refer to current instructions for detailed system use.

Customer Service

EMEA: EDI - www.cookmedical.com/edi.do
 Distributors: +353 61239240, ssc.distributors@cookmedical.com
 Austria: +43 179567121, oe.orders@cookmedical.com
 Belgium: +32 27001633, be.orders@cookmedical.com
 Denmark: +45 38487607, da.orders@cookmedical.com
 Finland: +358 97251996, fi.orders@cookmedical.com
 France: +33 171230269, fr.orders@cookmedical.com
 Germany: +49 6950072804, de.orders@cookmedical.com
 Hungary: +36 17779199, hu.orders@cookmedical.com
 Ireland: +353 61239252, ie.orders@cookmedical.com
 Italy: +39 0269682853, it.orders@cookmedical.com
 Netherlands: +31 202013367, nl.orders@cookmedical.com
 Norway: +47 23162968, no.orders@cookmedical.com
 Spain: +34 912702691, es.orders@cookmedical.com
 Sweden: +46 858769468, se.orders@cookmedical.com
 Switzerland - French: +41 448009609, fr.orders@cookmedical.com
 Switzerland - Italian: +41 448009609, it.orders@cookmedical.com
 Switzerland - German: +41 448009609, de.orders@cookmedical.com
 United Kingdom: +44 2073654183, uk.orders@cookmedical.com

www.cookmedical.com

Americas: EDI - www.cookmedical.com/edi.do
 Phone: +1 812.339.2235, 800.457.4500, Fax: 800.554.8335
 E-mail: orders@cookmedical.com

Australia:
 Phone: +61 738411188, 1800777222, Fax: +61 738411288, 1800077283
 E-mail: cau.custserv@cookmedical.com

