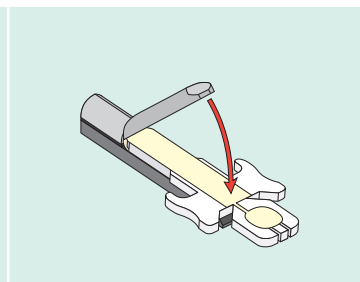
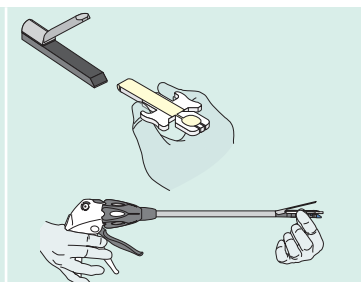
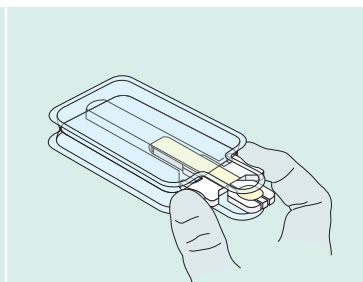
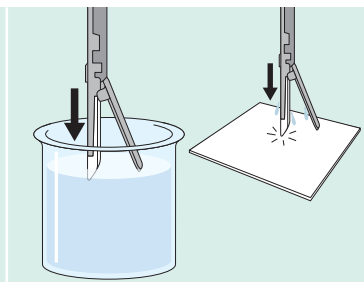
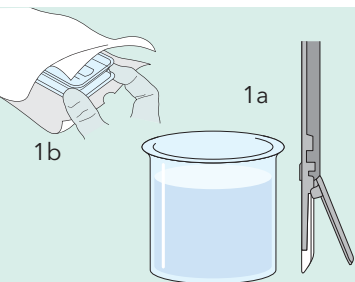




Biodesign[®]
ADVANCED TISSUE REPAIR

Procedural Guide

Apply the staple line reinforcement with these simple steps.



1a. Prepare a basin of warm sterile water or sterile saline. The liquid should be no warmer than 54°C/130°F. The basin should be deep enough to accommodate the length of the stapler jaws. Prepare the basin of warm liquid no more than 5 minutes before step 2.

1b. With a sterile gloved hand, pull the tray out of the sterile pouch. Place the tray in a sterile field.

2. Dip the stapler jaws into the basin for 3 seconds to allow the stapler to become moist and warm. Lift the stapler jaws from the liquid and tap the stapler to remove excess liquid.

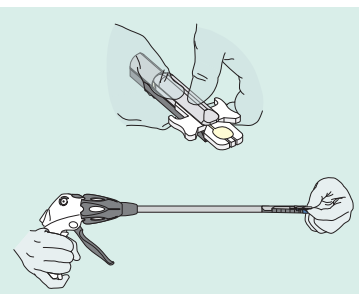
3. Remove the staple line reinforcement from the tray by holding the finger grips on the wings of the foam applicator. Do not grab or hold the strip by the tail.

4. Place the applicator inside the wet jaws of the stapler. Align the edges of the applicator with the edges of the lower stapler jaw. Gently insert the applicator to the back of the stapler jaws, where the applicator provide a stop.

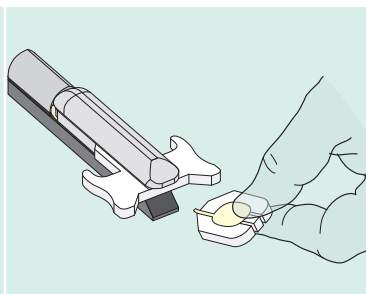
5. Close the jaws of the stapler on the strip and foam applicator.

Procedural Guide (cont.)

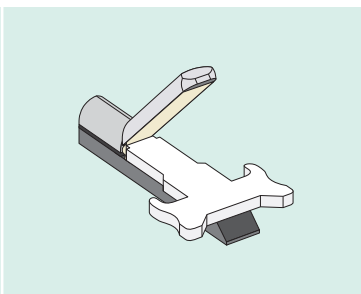
Apply the staple line reinforcement with these simple steps.



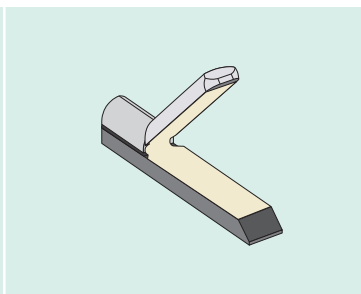
6. Keep the jaws tightly closed with fingers or by compressing the handle on the stapler for at least 10 seconds to allow the liquid to activate the adhesive.



7. While holding the jaws closed, grip the tail of the foam applicator and use a side-to-side motion to detach it. Discard the tail.

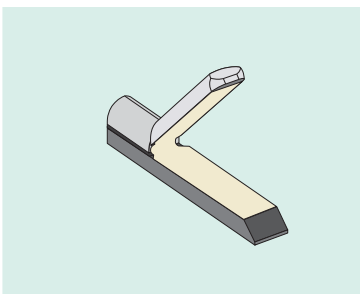


8. Open the jaws of the stapler. Remove the remainder of the foam applicator and discard it.



9. Inspect device alignment to ensure complete coverage of both the cartridge and anvil sides of the stapler jaws.

Note: Between every use with Ethicon® staplers, wipe the anvil side clean.



10. The stapler is ready to use. Check the staple line reinforcement for adherence to the jaws. If the strip is not lined up or fully adhered to the stapler, remove and discard it, and apply a new one.

Note: The strip must be used within 20 minutes after being applied to the stapler.