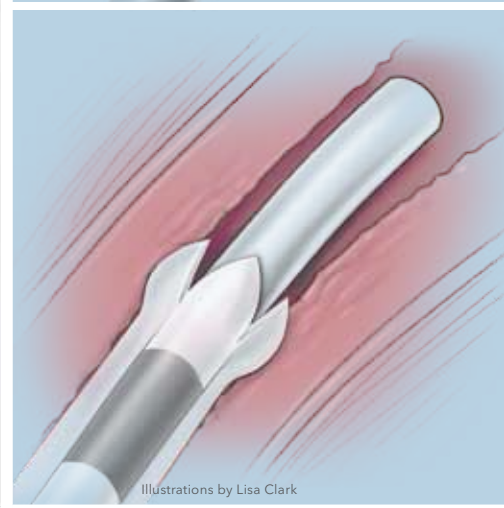
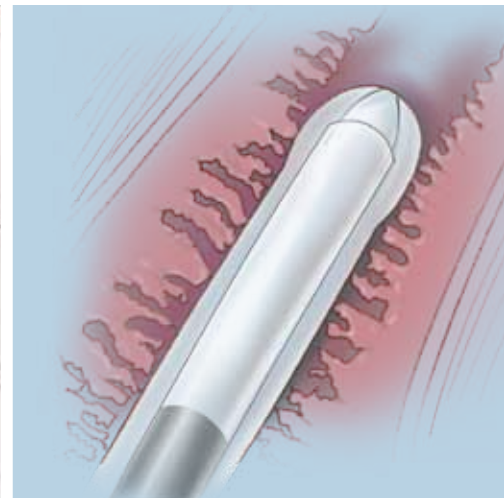
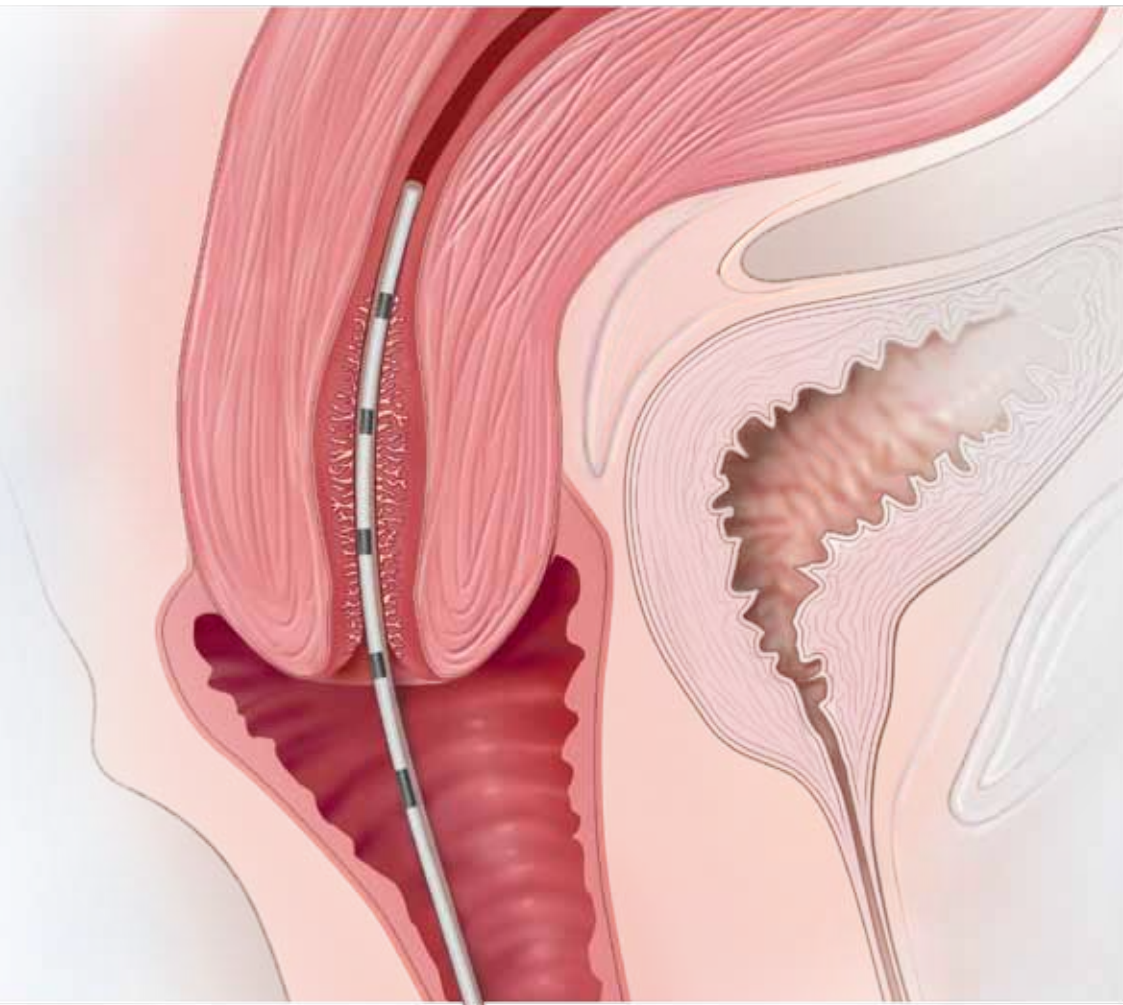




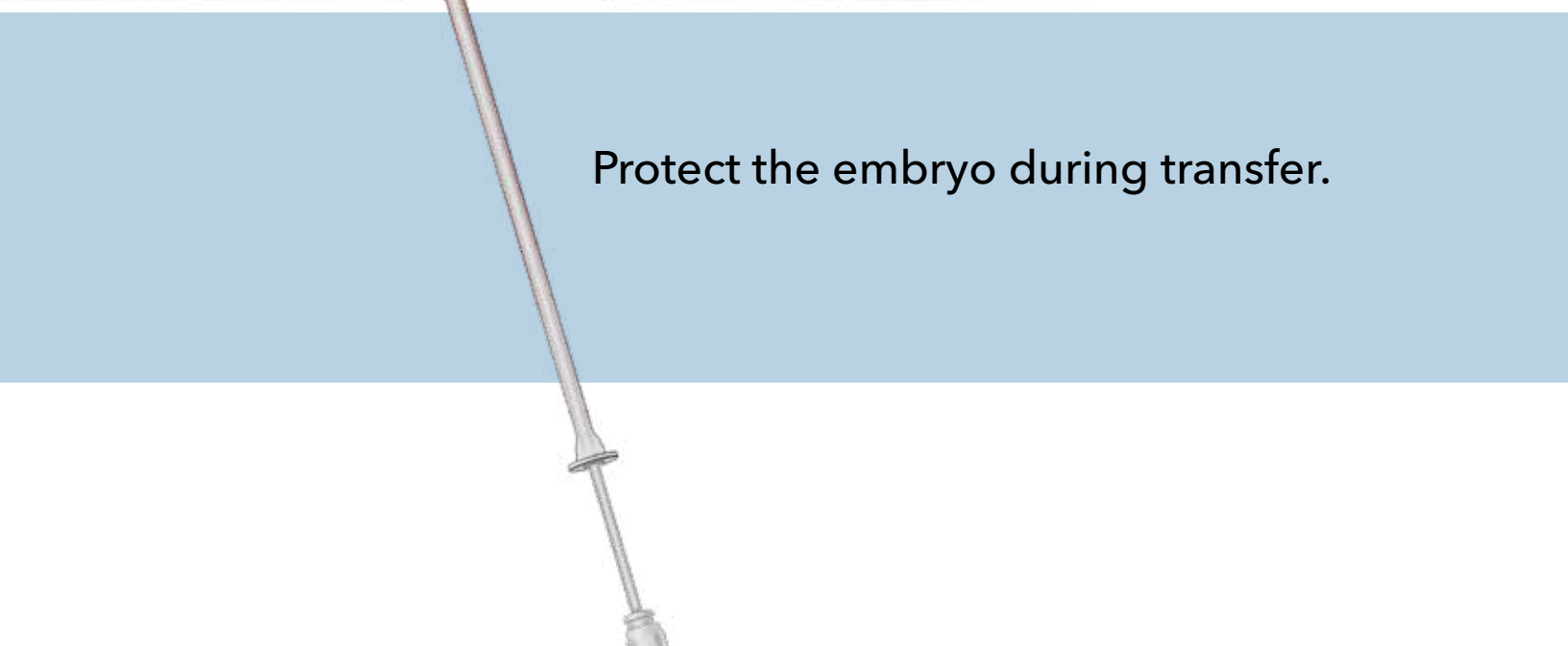
Guardia™ Pro

PROTECTIVE EMBRYO TRANSFER CATHETER



Illustrations by Lisa Clark

Protect the embryo during transfer.



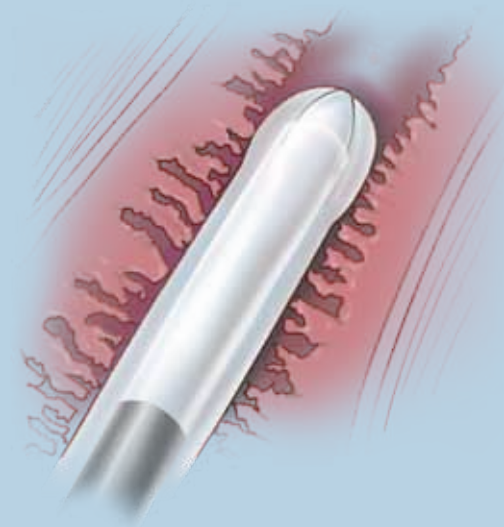


Guardia™ Pro

PROTECTIVE EMBRYO TRANSFER CATHETER

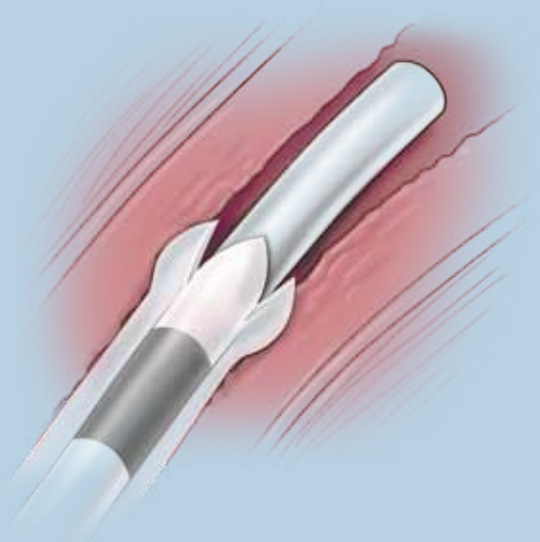
Combining embryo protection and transfer in one simple tool.

The first product of its kind, the new Guardia Pro Protective Embryo Transfer Catheter from Cook Medical makes possible the **safe transfer of embryos through cervical mucus and blood**. This one, elegantly simple tool can achieve this without the need for cervical flushing or aspiration prior to embryo placement.



The outer protective sheath's **smooth, bullet-shaped tip** is designed to allow the catheter to **glide more smoothly** than traditional transfer catheters, providing an atraumatic experience for the embryo and patient.

CookARTlab.com



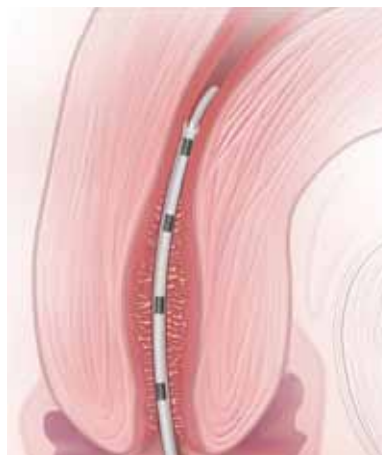
After passing through the cervix to the internal os, the tip's **unique petal design** can be safely opened to release the embryo.

In addition, this catheter uses **Microvol™ technology** that decreases the volume of media required for embryo transfer, reducing the chance of embryo migration and allowing more accurate embryo placement.

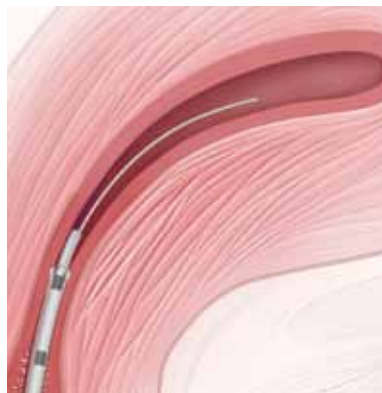
Simple Procedure



- 1 The guide catheter with outer protective sheath is advanced through the cervix and into the uterine cavity.



- 2 The protective sheath is then retracted to the hub of the guide catheter, opening the petals to expose the tip of the guide catheter.



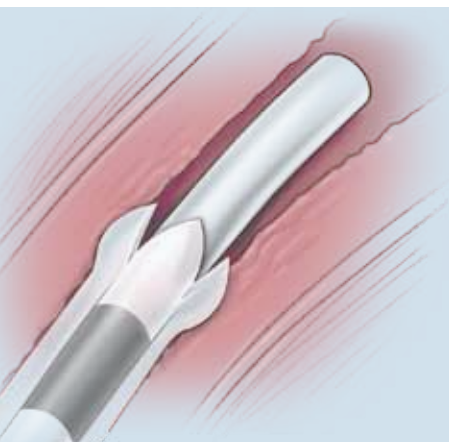
- 3 The inner transfer catheter, previously loaded with embryos, is then advanced directly through the guide catheter into the uterine cavity.

Refer to the Instructions for Use supplied with each product for specific information on indications for use, contraindications, warnings and precautions.



Guardia™ Pro

PROTECTIVE EMBRYO TRANSFER CATHETER



Designed to allow the safe passage of embryos through cervical mucus and blood, the Guardia Pro Protective Embryo Transfer Catheter simplifies the transfer process and provides a more comfortable experience for the patient. The outer sheath protects the embryo through entry and then opens in petals to further advance the inner catheter and gently place the embryo.

Cook Medical—Advancing opportunities for successful embryo transfer.

Global Product Number	Order Number	Transfer Catheter Fr	Transfer Catheter Length cm	Guide Catheter Fr	Guide Catheter Length cm	Protective Sheath Fr	Protective Sheath Length cm
Guardia Pro Protective Embryo Transfer Catheter							
G49134	K-MVOL-701210-PS	2.8	19	4.7	12	7.0	11
G49135	K-MVOL-701710-PS	2.8	24	4.7	17	7.0	16

Used to place in vitro fertilized (IVF) embryos into the uterine cavity. Intended for one-time use.



www.cookmedical.com

COOK MEDICAL INCORPORATED

P.O. Box 4195, Bloomington, IN 47402-4195 USA
Phone: 812.339.2235, Toll Free: 800.457.4500, Toll Free Fax: 800.554.8335

COOK IRELAND LTD.

O'Halloran Road, National Technology Park,
Limerick, IRELAND, Phone: +353 61 334440, Fax: +353 61 334441

COOK (CANADA) INC.

111 Sandiford Drive, Stouffville, Ontario, L4A 7X5 CANADA
Phone: 905.640.7110, Toll Free: 800.668.0300, Fax: 905.640.6804

WILLIAM A. COOK AUSTRALIA PTY. LTD.

95 Brandl Street, Brisbane Technology Park, Eight Mile Plains
Brisbane, QLD 4113 AUSTRALIA, Phone: +61 7 3841 1188

© COOK 2009

WH-BM-SPETC-EN-200906

AORTIC
INTERVENTION

CARDIOLOGY

CRITICAL
CARE

ENDOSCOPY

INTERVENTIONAL
RADIOLOGY

PERIPHERAL
INTERVENTION

SURGERY

UROLOGY

WOMEN'S
HEALTH